



HP PageWide XL 8000 Printer

The fastest large-format monochrome and color printer ever, with up to 50% savings in total production costs¹



ACCELERATE

Meet the tightest deadlines

- Print up to 30 D/A1 pages/min (1500 D/A1 pages/hr)—the fastest print speed in the market, even versus LED¹
- Deliver mixed monochrome and color sets in 50% of the time with a consolidated workflow²
- Start printing in 50% of the time³—an ultra-fast processor, native PDF management, HP SmartStream software
- Free up the operator—production stacker/online folder,⁴ up to 6 rolls, dual ink supplies with auto-switch

GROW

Fast color, excellent document quality

- Generate new business growth—print GIS map and point-of-sale (POS) poster applications at breakthrough speeds
- Set a new technical document standard with crisp lines, fine detail, and smooth grayscales that beat LED⁵
- HP PageWide XL pigment ink for dark blacks, vivid color and moisture/fade resistance—even on uncoated bond⁶
- Print on a wide range of media up to 40 inches/101.6 cm—covering ISO/US technical and offset standards⁷

SAVE

Cut total production costs up to 50%¹

- Print monochrome technical documents at the same or lower cost than comparable LED printers⁸
- Print color technical documents at the lowest cost in the market⁹
- Cut job preparation and finishing costs up to 50%²
- See up to 10 times lower energy consumption than comparable LED printers¹⁰

For more information, please visit hp.com/go/pagewidexl8000



reddot award 2016
best of the best



Dynamic security enabled printer. Cartridges using a non-HP chip might not work and those that work today might not work in the future. More at: hp.com/go/learnaboutsupplies

Note: HP PageWide XL printers are not designed to use continuous ink systems. HP PageWide XL printers are designed for ink cartridges to be used until they are empty. Refilling cartridges prior to depletion might cause the printer to fail, and voids the HP ink cartridge warranty.

¹ Fastest based on internal HP testing and methodology compared to alternatives for large-format printing of technical documents, GIS maps, and point-of-sale (POS) posters under \$200,000 USD as of March, 2015. Production costs savings based on comparison to a setup consisting of one monochrome LED printer and one color production printer, both under \$150,000 USD, as of April, 2015. Production costs consist of supplies and service costs, printer energy costs, and operator costs. For testing criteria, see hp.com/go/pagewidexlclaims.

² Based on internal HP testing on the HP PageWide XL 8000 Printer compared to using two different printers (one monochrome LED printer, one color printer). For testing criteria, see hp.com/go/pagewidexlclaims.

³ Using HP SmartStream software compared with using equivalent software programs. For testing criteria, see hp.com/go/pagewidexlclaims.

⁴ The production stacker, online folder, and HP HD/SD Pro Scanners are optional accessories.

⁵ For output produced with HP PageWide XL printers and LED printers from different manufacturers and that represent greater than 50% of the annual shipments of LED printers in North America as of 2014 according to IDC. For testing criteria, see hp.com/go/pagewidexlclaims.

⁶ Compared to prints produced with HP 970/971/980 inks that are fade and moisture resistant per ISO 11798 Permanence and Durability Methods certification. For testing criteria, see hp.com/go/pagewidexlclaims.

⁷ ISO/US technical and offset standards include American ANSI and Architectural page size standards, ISO A technical document standard, and ISO B offset page size standard.

⁸ Based on supplies and service costs for comparable LED printers under \$150,000 USD for large-format printing of technical documents as of April, 2015 which represent more than 80% of the share of high-volume LED printers in the US and Europe in 2014 according to IDC. For testing criteria, see hp.com/go/pagewidexlclaims.

⁹ Based on supplies and service costs for comparable color printers capable of printing 4 D/A1 pages per minute or more and under \$150,000 USD for large-format printing of technical documents as of April, 2015 and representing more than 80% of the market in the US and Europe in 2014 according to IDC. For testing criteria, see hp.com/go/pagewidexlclaims.

¹⁰ Conclusions based on internal HP testing for a specific use scenario. Comparable printers using LED technology based on LED printers capable of printing 18 to 22 D/A1 pages per minute and which represent more than 80% of the share of high-volume LED printers in the US and Europe according to IDC as of April, 2015. For testing criteria, see hp.com/go/pagewidexlclaims.

Based on reliable HP Thermal Inkjet technology and HP PageWide XL pigment ink, HP PageWide Technology offers high quality at high printing speeds. Scalable to meet a wide range of application and performance requirements, HP PageWide Technology saves up to 50% in total production costs in the fastest large-format monochrome and color printer.¹

HP PageWide Technology

The HP PageWide XL 8000 Printer includes a stationary 40-inch (101.6-cm) printbar that spans the whole printing width. As paper moves under the printbar, the entire page is printed in one pass, enabling very high printing speeds.

HP PageWide XL pigment ink for HP PageWide XL printers

HP PageWide XL pigment ink is specially designed to provide reliable and dependable operation with HP PageWide XL printers and produce high-quality output:

- Dark blacks and vivid colors on a range of media including uncoated bond papers
- Moisture- and fade-resistant prints⁶



8 (2 x 775-ml per color with auto-switch)

Reliable operation for high-volume printing

Designed for high-volume operation, the HP PageWide XL 8000 Printer is based on proven HP PageWide Technology, currently powering HP PageWide Web Presses—producing 4 billion impressions monthly—and HP PageWide Pro and HP PageWide Enterprise printers.

HP 841 PageWide XL Printheads provide reliable and long-life operation, with an average life per printhead of 32 liters of ink.

End-to-end productivity

HP PageWide XL systems have been designed to help you provide radically faster delivery.

To help you meet aggressive deadlines, productivity is optimized in every step of the workflow:



1. Using HP SmartStream Preflight Manager, jobs can be prepared in 50% of the time³
2. With an ultra-fast processor and the embedded Adobe PDF Print Engine 4,¹¹ HP PageWide XL printers are designed for quick processing, including the most complex jobs
3. Printing up to 30 D/A1 pages/minute (1500 D/A1 pages/hr) with outstanding sustained capacity thanks to:
 - Breakthrough print engine speed of up to 75 feet/minute (23 meters/minute)
 - Very short time between pages (up to 0.15 seconds)
 - Extended time between service station cycles (up to hundreds of pages)
 - Quick switches between loaded rolls (under 5 seconds)
4. Bidirectional communication between the HP PageWide XL printer and the production stacker/online folder⁴ provides reliable operation

Set a new quality standard for technical documents

HP 841 PageWide XL Printheads, working with HP PageWide XL pigment ink, are designed to produce crisp lines, fine detail, and smooth grayscales along with vivid colors. HP PageWide XL printers do not apply heat to the paper as part of the printing process, enabling very high levels of line accuracy ($\pm 0.1\%$).¹²

Gain even greater versatility

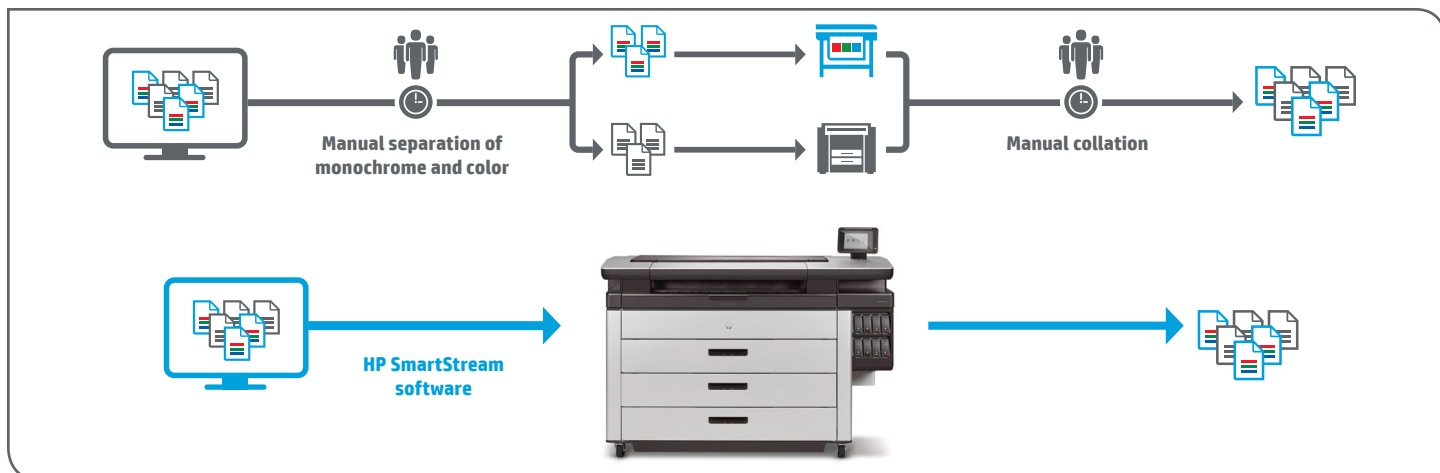
Expand the versatility of your HP PageWide XL 8000 Printer with HP and third-party software and hardware solutions, see hp.com/go/pagewidexl3rdparty. Cover a wide range of applications with HP large format printing materials optimized with HP PageWide XL printers and pigment inks for high-quality printing, see HPLFMedia.com. And choose from a growing variety of other commercially available media compatible with HP PageWide XL printers, see hp.com/go/mediasolutionslocator.

Gain insight and control over print costs

HP SmartTracker software provides powerful, consolidated data tracking and reporting.¹³ Now you can easily keep track of both print costs and reimbursement fees. Produce easy-to-read, customizable, consolidated reports that provide greater control and turn your print costs to your advantage. For more information, please see hp.com/go/smarttracker.

Save time by consolidating your monochrome and color workflows

It is very common to print mixed monochrome and color sets—typically a long and complex process that requires separate printing on different printers as well as manual collation. Consolidated workflow efficiencies in delivering mixed monochrome and color sets help contribute to up to 50% savings in total production costs.¹ HP SmartStream software can help you improve your technical production workflow efficiency for single, multiple operator environments by preparing your jobs in 50% of the time.³



1. **Up to 6 rolls**—automatic roll switching when a roll is depleted or a different page size is selected.
2. **Dual 775-ml HP ink supplies** with auto-switch—replace used cartridges while the printer is running.
3. **High-capacity output solutions**—folder and stacker specially designed to keep up with HP PageWide XL print speeds.
4. **8-inch (203-mm) touchscreen**—**status light reports** current status and provides progressive alerts on potential issues that could impact production (i.e., out of paper or ink).



Technical specifications

General	Description	Large-format color printer
	Technology	HP PageWide Technology
	Applications	Line drawings, Maps, Orthophotos, Posters
	Ink types	Pigment-based (cyan, magenta, yellow, black)
	Ink cartridges	8 (2 x 775-ml per color) with auto-switch
	Printheads	8 x HP 841 PageWide XL Printheads
	Average printhead life	32 liters
	Printhead warranty	10 liters or 12 months from installation
	Print resolution	1200 x 1200 dpi
	Minimum line width	0.0008 in (0.02 mm) (HP-GL/2 addressable)
	Guaranteed minimum line width	0.0033 in (0.085 mm) (ISO/IEC 13660:2001(E)) ¹⁴
	Line accuracy	± 0.1% ²
Print speed¹⁵	Maximum print speed ¹⁶	75 ft/min (23 m/min)
	A1/Arch D/ANSI D (long edge first)	30 pages/min, 1500 pages/hr
	A0/Arch E/ANSI E (short edge first)	18 pages/min, 800 pages/hr
	ISO B1 (long edge first)	24 pages/min
	ISO B0 (short edge first)	15 pages/min
	Warm-up time	No warm up
	First page out	20 sec (from Ready mode)
Media	Media rolls	2 rolls default with auto-switching, expandable to 6 rolls
	Roll width	11 to 40 in (279 to 1016 mm)
	Roll length	Up to 650 ft (200 m)
	Roll diameter	Up to 7 in (177 mm)
	Roll core diameter	3 in (7.6 cm)
	Printable width	Up to 39.4 in (1000 mm)
	Printable length	Up to 650 ft (200 m) for CAD and 98 ft (30 m) for poster ¹⁷
	Media weight	19 to 53 lb (70 to 200 g/m ²)
	Media thickness	Up to 15.7 mil
	Media types	Bond and recycled papers, Tyvek® papers, poster papers, polypropylene, matte film
	Media output (standard)	Basket, high-capacity stacker
	Media output (optional)	Online folder, top stacker
HP HD/SD Pro Scanners⁴	Scan speed ¹⁸	Color: up to 6 in/sec (15 cm/sec) Grayscale: up to 13 in/sec (33 cm/sec)
	Optical resolution	1200 dpi
	Maximum scan width	44-in (1118-mm) with the HP SD Pro 44-in Scanner 42-in (1067-mm) with the HP HD Pro 42-in Scanner
	Settings	Type of original-preset, color mode, resolution (dpi), batch, single/multi-page, file format, customizable file naming, customizable default settings, de-skew, image crop and align preview, enlarge/reduce, blueprint, lightness, saturation and RGB controls, white point and black point adjust, sharpen/blur, background removal, invert, mirror, accounting
High-capacity stacker	Maximum page size	40 x 48 in (102 x 122 cm) ¹⁹
	Capacity	Up to 500 pages
	Media weight	19 to 53 lb (70 to 200 g/m ²)
	Dimensions	55.6 x 49.1 x 42.6 in (101 x 125 x 108 cm)
	Weight	308 lb (140 kg)
Online folder	Page width	11 to 36 in (28 to 91.4 cm)
	Page length	Cross fold: 8.2 ft (2.5 m) Fan fold: 19.7 ft (6 m) (standard), unlimited (optional with HP PageWide XL Folder Upgrade Kit for Long Plots)
	Media weight for folding	20 to 24 lb (75 to 90 g/m ²)
	Media weight for stacking	20 to 53 lb (75 to 200 g/m ²)
	Capacity	Up to 150 (E/A0)
	Dimensions	82.7 x 63.8 x 48 in (2100 x 1620 x 1220 mm)
	Weight	794 lb (360 kg)
	Tab Applicator	Available with HP PageWide XL Folder with Tab Applicator only
Embedded controller	Processor	Intel Core i7
	Memory	16 GB DDR
	Hard drive	1x 128 GB SSD; 1x 500 GB HDD, self-encrypted with AES-256
	Print languages (standard)	HP-GL/2, PCL 3 Win, Adobe PostScript 3, Adobe PDF 1.7, TIFF, JPEG
	Remote management	HP Partner Link, HP Embedded Web Server, HP Web Jetadmin

¹¹ The Adobe PDF Print Engine (APPE) is Adobe's high speed, high fidelity print platform. Version 4 extends APPE's leading edge for print reproduction with new performance efficiencies and breakthrough rendering features. APPE 4 enables printers to increase workflow efficiency and capitalize on the profit potential of innovations in inkjet print technology. To learn more, visit adobe.com/products/pdfprintengine.

¹² ±0.1% of the specified vector length or ±0.2 mm (whichever greater) at 23°C (73°F), 50-60% relative humidity, on A0/E printing material in Best or Normal mode with HP Matte Polypropylene and HP PageWide XL pigment ink.

¹³ Data is consolidated across all your HP PageWide XL printers and multifunction printers, with the exception of HP PageWide XL blueprinters, as of March, 2017.

¹⁴ Measured on HP Universal Bond paper.

¹⁵ Print speed while printing to the HP PageWide XL High-capacity Stacker. When printing to the top stacker, the maximum print speed is 12 pages/minute.

¹⁶ Measured using 36-in (91-cm) print width.

¹⁷ For longer plots (up to 656 ft (200 m)), image quality might be affected.

¹⁸ Monochrome scanning: D/A1 image with black text graphics at 200 dpi; color scanning: D/A1 fully-inked color image at 200 dpi, 24-bit RGB.

¹⁹ Long plots with reduced capacity.

²⁰ Printing to non-HP large format printers is done through specific drivers, each of them covering several printers: Océ Windows Printer Driver (WPD), KIP Windows Driver WHQL, RICOH PostScript Driver, Xerox WHQL Driver. For more information, please visit hp.com/go/smarterstream/trial.

²¹ BMG trademark license code FSC®-C115319, see fsc.org. HP trademark license code FSC®-C017543, see fsc.org. Not all FSC®-certified products are available in all regions. For information about HP large format printing materials, please visit HPLFMedia.com.

²² Can be recycled through commonly available recycling programs.

Connectivity	Interfaces	TCP/IP, BootP/DHCP, USB 2.0 host (certified)
	Printing paths	HP SmartStream software (optional) HP Universal Print Driver (HP-GL/2 and PS) HP PageWide XL print drivers (PDF, HP-GL/2, and PS)
User interface	User interface	8-inch capacitive touchscreen
Dimensions	Printer	77.2 x 31.5 x 60.1 in (1960 x 800 x 1527 mm)
	Shipping	86.8 x 42.1 x 69.5 in (2180 x 1068 x 1764 mm)
Weight	Printer	1054 lb (478 kg)
	Shipping	1290 lb (585 kg)
Environmental	Operating temperature	41 to 104°F (5 to 40°C)
	Recommended temperature	59 to 95°F (15 to 35°C)
	Operating humidity	20 to 80% RH, depending on media type
Acoustic	Sound pressure	58 dB(A) (printing), 36 dB(A) (ready), <20 dB(A) (sleep)
	Sound power	7.4 B(A) (printing), 5.2 B(A) (ready), 3.8 B(A) (sleep)
Power	Consumption	0.59 kW (typical), ≤ 1.2 kW (max printing); 108.4 watts (ready); < 1 watts (≤ 4.6 watts with embedded Digital Front End) (sleep)
	Requirements	Input voltage (auto ranging) 200-240 V (±10%), 50/60 Hz (±3 Hz), 8 A
Certification	Safety	IEC 60950-1+A1+A2 compliant; USA and Canada (CSA listed); EU (LVD and EN 60950-1 compliant); Russia, Belarus, and Kazakhstan (EAC)
	Electromagnetic	Compliant with Class A requirements, including: USA (FCC rules), Canada (ICES), EU (EMC Directive), Australia and New Zealand (RCM), Japan (VCCI), Korea (KC)
	Environmental	ENERGY STAR, EPEAT Silver, CE marking (including RoHS, WEEE, REACH); in compliance with WW RoHS materials restriction requirements in China, Korea, India, Vietnam, Turkey, Serbia, and Ukraine
Warranty	90 days	

Ordering information

Product	CZ309B	HP PageWide XL 8000 40-in Printer with High-capacity Stacker and PostScript/PDF
Accessories	G6H50B	HP SD Pro 44-in Scanner
	G6H51B	HP HD Pro 42-in Scanner
	K5H75A	HP PageWide XL Folder
	L3M58A	HP PageWide XL Folder with Tab Applicator
	MOV04A	HP PageWide XL Folder Upgrade Kit for Long Plots
	CZ318A	HP PageWide XL Drawer
	CZ320A	HP PageWide XL Top Stacker
	L3J69AAE	HP SmartStream Preflight Manager
	L3J72AAE	HP SmartStream Print Controller for HP PageWide XL 8000
	T9B46AAE	HP SmartStream Print Controller for non-HP Large Format printers ²⁰
	Z8J14AAE	HP SmartTracker for HP PageWide XL 8000 Printer
Original HP PageWide XL printheads and consumables	C1Q19A	HP 841 PageWide XL Printhead
	F9J47A	HP 841 PageWide XL Cleaning Container
	F9J48A	HP 841 PageWide XL Maintenance Cartridge
Original HP PageWide XL ink cartridges	C1Q45A	HP 842A 775-ml Black PageWide XL Ink Cartridge
	C1Q46A	HP 842A 775-ml Cyan PageWide XL Ink Cartridge
	C1Q47A	HP 842A 775-ml Magenta PageWide XL Ink Cartridge
	C1Q48A	HP 842A 775-ml Yellow PageWide XL Ink Cartridge

Dynamic security enabled printer. Cartridges using a non-HP chip might not work and those that work today might not work in the future. More at: hp.com/go/learnaboutsupplies

Original HP large format printing materials	L4L08A	HP Universal Bond Paper, 3-in Core (FSC® certified) ²¹ ♻️ ²² 914 mm x 152.4 m (36 in x 500 ft)
	L5P98A	HP Production Matte Poster Paper, 3-in Core (FSC® certified) ²¹ ♻️ ²² 1016 mm x 91.4 m (40 in x 300 ft)
	L5Q03A	HP Production Satin Poster Paper, 3-in Core (FSC® certified) ²¹ ♻️ ²² 1016 mm x 91.4 m (40 in x 300 ft)
	L5C80A	HP Universal Heavyweight Coated Paper, 3-in Core (FSC® certified) ²¹ ♻️ ²² 914 mm x 91.4 m (36 in x 300 ft)
	L6B19A	HP Matte Polypropylene, 3-in Core 1016 mm x 45.7 m (40 in x 150 ft)

Enjoy best-in-class support services, knowing HP works with HP PageWide XL Channel Partners to enable them to be properly trained, certified, and equipped to meet your needs. With efficient support and innovative support features, such as printer self-monitoring, predefined resolution paths, and intuitive maintenance wizards, you can work with confidence every day. For more information, please visit hp.com/go/pagewidexlservice.

HP Financial Services can help you acquire an HP PageWide XL printing solution and accelerate the benefits to your business. Our solutions can help you increase your flexibility by preserving cash, freeing up budgets with a monthly payment structure, and offering an easy option to upgrade to the latest model when your business is ready. For more information, please visit the Programs and Promotions section on hp.com/hpfinancialservices.

Find the media solution that fits your business and your HP PageWide XL printer at hp.com/go/mediasolutionslocator.

Eco Highlights

- Save paper with automatic print settings and image nesting
- ENERGY STAR® certified and EPEAT Silver registered¹
- Free, convenient HP ink cartridge recycling²
- FSC®-certified papers,³ range of recyclable HP media⁴




¹ EPEAT registered where applicable and/or supported. See epeat.net for registration status and rating by country.

² Program availability varies. Please check hp.com/recycle for details.

³ BMG trademark license code FSC®-C115319, see fsc.org. HP trademark license code FSC®-C017543, see fsc.org. Not all FSC® certified products are available in all regions. For information about HP large format printing materials, please visit HPLFMedia.com.

⁴ Can be recycled through commonly available recycling programs.

Please recycle large-format printing hardware and printing supplies.
Find out how at our website hp.com/ecosolutions



© Copyright 2017 HP Development Company, L.P. The information contained herein is subject to change without notice. The only warranties for HP products and services are set forth in the express warranty statements accompanying such products and services. Nothing herein should be construed as constituting an additional warranty. HP shall not be liable for technical or editorial errors or omissions contained herein.

ENERGY STAR and the ENERGY STAR mark are registered trademarks owned by the U.S. Environmental Protection Agency.

Adobe, PostScript, and Adobe PostScript 3 are trademarks of Adobe Systems Incorporated. Intel and the Intel Inside logo are trademarks of Intel Corporation in the U.S. and other countries. Windows is a U.S. registered trademark of Microsoft Corporation. Mac and the Mac logo are trademarks of Apple Computer, Inc., registered in the U.S. and other countries.

4AA5-6959ENA, February 2017

